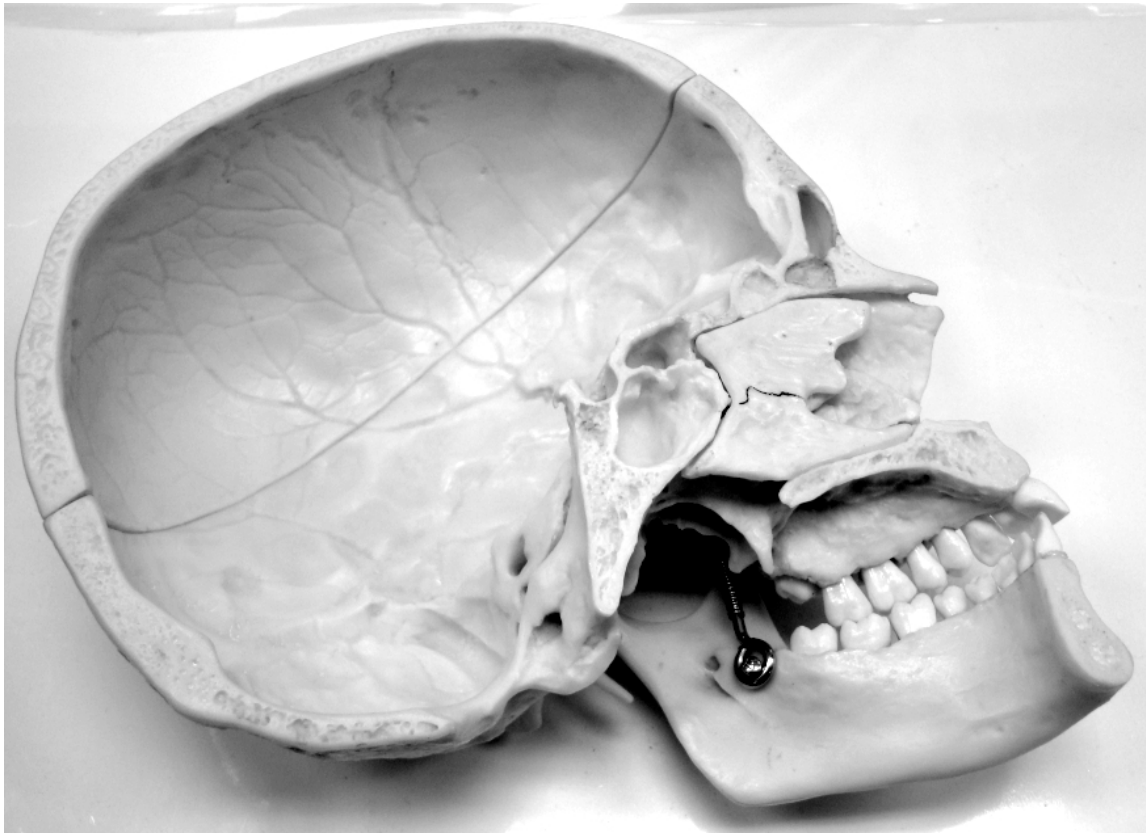


For the audio version of the file, click this link: [ID - Midsagittal Skull Audio](#)



What you need to ID sheet – Plastic “Pop Top Skull” Model

This sheet tells you what you need to be able to identify on this model – check the “to know” sheet for anything else you may need to know about this topic.

You are **done** with this model when you can identify **all** of the following structures:

Cranium

coronal suture
lambdoidal suture
squamous suture

frontal bone – frontal sinus

L parietal bone

L temporal bone - external acoustic meatus, mandibular fossa, mastoid process, styloid process, zygomatic process & zygomatic arch

occipital bone – foramen magnum, occipital condyles

sphenoid bone - greater wings, lesser wings, optic canal, sella turcica, sphenoid sinus

ethmoid bone – crista galli, cribriform plate

Facial bones

mandible – condylar head, mental foramen, mandibular foramen

maxilla – palatine process

L palatine bone

L zygomatic bone

L lacrimal bone

L nasal bone

vomer

L inferior nasal concha